



Bulk Material Handling Products

Xiamen Cafu Mechanical Equipment Co., Ltd

Add: No. 117, Feng shan yi li, Tong 'an District, Xiamen, Fujian, China.

E-mail: sales@xmcafu.com

Tel: +86-592-7010098、+86-18120740098(WhatsApp)



COMPANY PROFILE


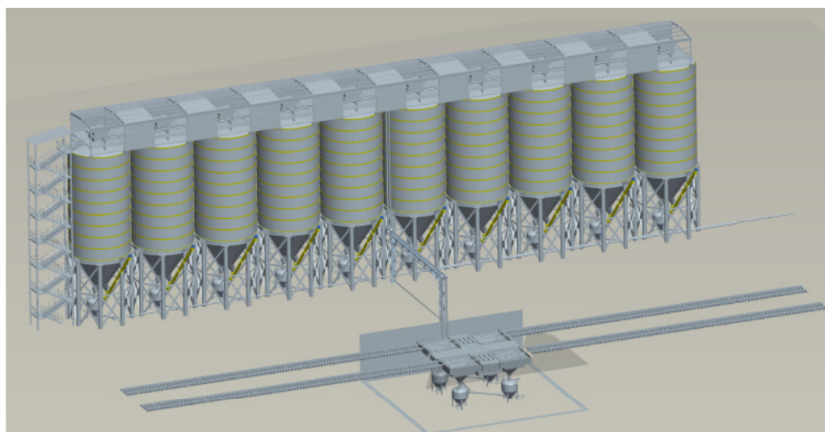
Xiamen Cafu Mechanical Equipment Co., Ltd, focuses on the development and application of bulk material handling products.

The main products are: Metal silo, Powder pneumatic conveying system, Bucket conveyor system, Modular belt conveyor, Apron chain conveyor, Conveyor belt washing systems, Gravel sifter machine, Portable crushing plants, Dry mortar production line, Portable concrete mixing plant, etc.



Committed to providing professional design consulting services and one-stop product integration solutions for global users.

INNOVATION & RESEARCH



5⁺ Professional Engineers

10⁺ Engineering Experience

ADVANTAGE

CAFU provides not only high-quality products, we understand the needs of customers better, and are committed to providing customers with innovative bulk material handling products.

Continuously improve customer experience by managing the entire project life cycle and help global customers succeed.

Compared with traditional silo engineering, CAFU's rapid assembly bulk material handling products, its solutions have the excellent performance of high efficiency, safety, long life and simple maintenance.



long lifespan



Quick assembly

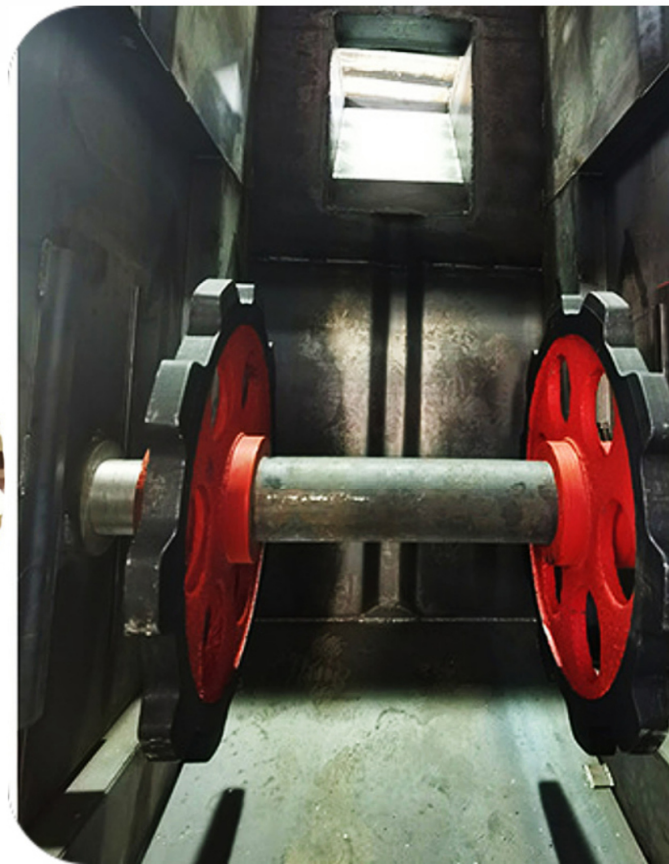


More, Faster, Better, Saving



Customized

Vertical Bucket Conveyor



Large Manufacturing Plant

Stable Quality

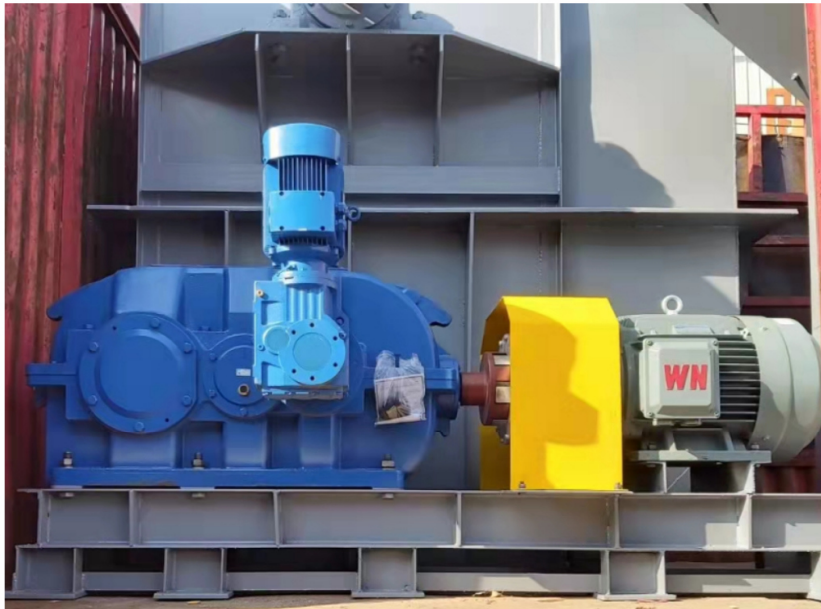
Advanced Manufacturing Process

TGD parameter table



Bucket width (mm)	Single bucket capacity (L)	Hopper spacing (mm)	Drum diameter (mm)	Belt speed (m/s)	Throughput (m3/H)		Lifting height (M)
					φ=100%	φ=75%	
250	5. 5	280	630	1. 34	94	70	≤100
315	6. 9				118	88	
400	14. 4	320	800	1. 51	244	183	
500	18. 0				305	229	
630	29. 4	360	1000	1. 68	494	370	
800	37. 3				626	469	
1000	46. 0				773	580	
1000	58. 0	400	1250	1. 90	992	744	
1250	72. 7				1243	932	
1400	99. 5	440			1546	1159	
1600	113. 7				1767	1325	

NE parameter table



Wide lifting range: it can lift powder, granular and block materials with a temperature of $<250^{\circ}\text{C}$.

Large conveying capacity: the lifting capacity ranges from 15 to 800 m^3/h .

NSE parameter table



Technical specifications of NSE series plate chain hoist

MODEL	Maximum output m ³ /h	Bucket volume L	Weight of running parts kg/m	Maximum chain speed m/min	Maximum lumpiness of material (mm)					
					Percentage %					
NSE100/NSE100/D	171.2/148.6	72.5/62.9	106.0/ 116.0	65.6	35	30	20	15	10	10
NSE200/NSE200/D	228.3/198.1	96.8 83.8	113.6 /125.0	65.6	35	30	20	15	10	10
NSE300/NSE300/D	285.4 247.6	120.8/104.8	121.3 /134.0	65.6	35	30	20	15	10	10
NSE400/NSE400/D	364.0 317.1	235.6/203.0	208.9 /217.3	66.26	50	40	30	25	20	20
NSE500/NSE500/D	486.4/423.8	188.2 /162.2	223.6 /234.1	66.26	50	40	30	25	20	20
NSE600/NSE600/D	608.8/530.5	140.8/121.4	238.2/250.9	66.26	50	40	30	25	20	20
NSE700/ NSE700/D				66.26	65	60	40	35	30	30
NSE800/ NSE800/D				66.26	65	60	40	35	30	30
NSE1000 /NSE1000/D				66.26	65	60	40	35	30	30